



# 1000x

## ARCHITECTURE OF THE AMERICAS

# 00x

## ECTURE ERICAS

1000x  
ARCHITECTURE  
OF THE AMERICAS

BRAUN

BRAUN

BRAUN



### CHATHAM HOUSE

The house in the heart of Shaker County provides living accommodations for a small family, and is home to a private art gallery for contemporary art and design objects. The building is raised on a low concrete dais; access is via a gently inclined ramp sprouting grass. The architectural gesture is composed of two shifted rectangular volumes bisected by a 16ft high, light-filled entrance gallery, which separates the main living space from the guest rooms. A detached studio clad in Cor-ten steel shingles is separated from the main block, yet the entire composition is neatly held together under one continuous roof sheathed in copper.

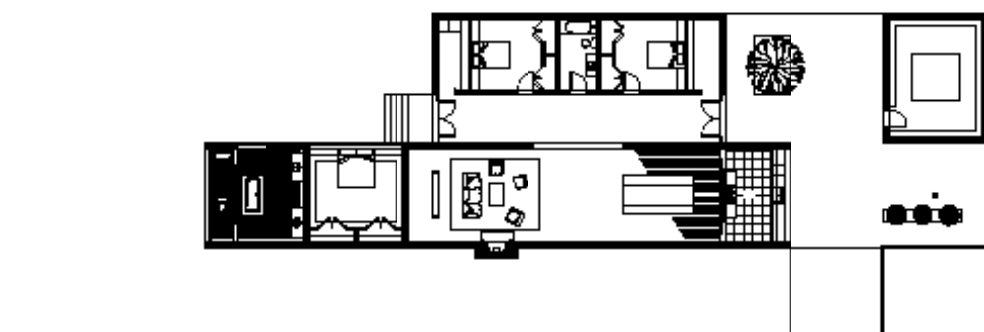
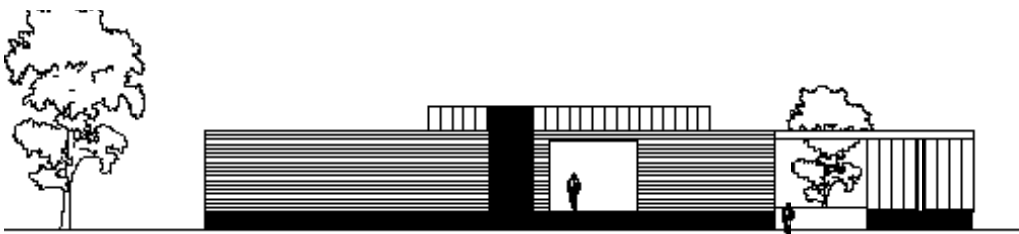
01 Dining room 02 Exterior view, detail low concrete dais  
03 Elevation and floor plan 04 Entrance gallery

Photos: XXXXXXXXXXXX

01



02



03



04



01



02

## GREENWICH VILLAGE TOWNHOUSE

The project rehabilitates an 1840's landmark townhouse completed in the Greek revival style, respecting the charms and scale of the original without mimicking its period details. The resulting home had to create a suitable context for the client's collection of XX century artwork. The interior is decidedly modernist in its attention to details, most of which were specially designed – from the marble mosaics in the bathrooms, to the millwork and shutters in the kitchen. A sculptural bronze-and-mirror screen creates an entrance foyer and uses cast glass that was salvaged from Gio Ponti's Alitalia showroom on Fifth Avenue.

01 Exterior view 02 Living room 03 Detail bronze-and-mirror screen with cast glass 04 Kitchen with millwork and shutters 05 Floor plans

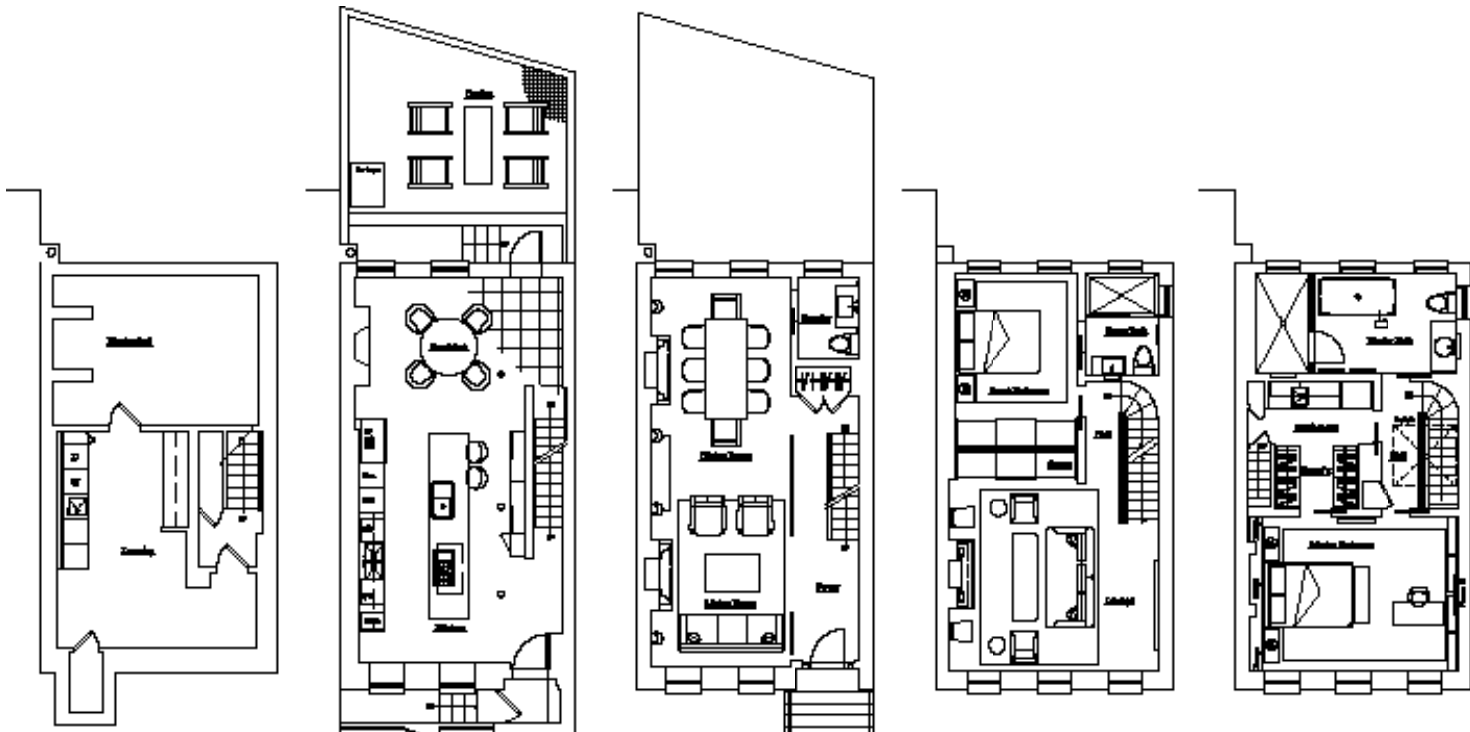
Photos: Andrew GARN



03



04



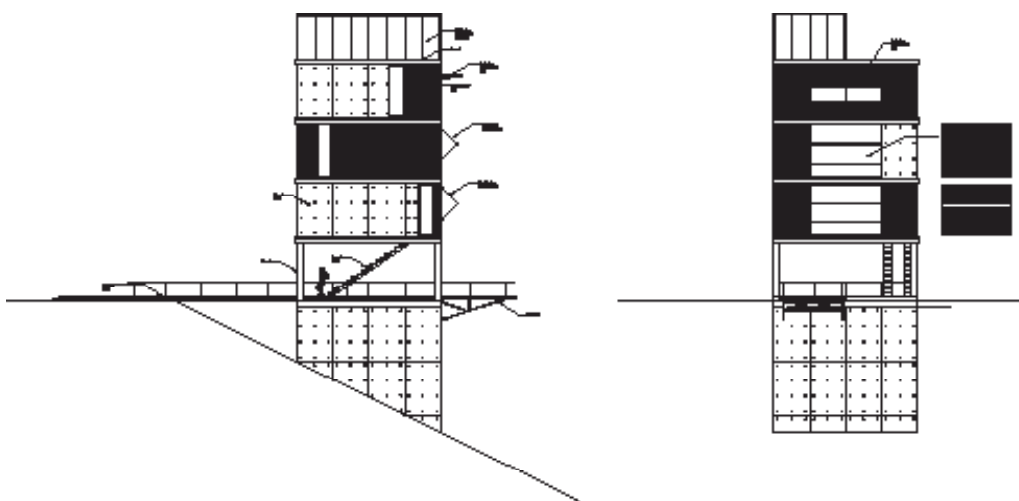
05

### VERTICAL HOUSE

The vertical house offers urban living on a rural site. The concept of a townhouse transposed to the country offers a unique solution to a difficult topology, and affords spectacular views. A long and dramatic bridge provides entry to a viewing platform from which one ascends a staircase into the house. The kitchen and dining areas are located on the first level, the living area is on the second level, and the master bedroom is on the third level. An open air garden is situated on the roof. The intention is that over time the house will be covered with vines descending from the roof, in effect making it into a modern ruin.

01 Sections 02 Entry bridge to viewing platform 03 Exterior view, hillside 04 Model 05 Floor plans

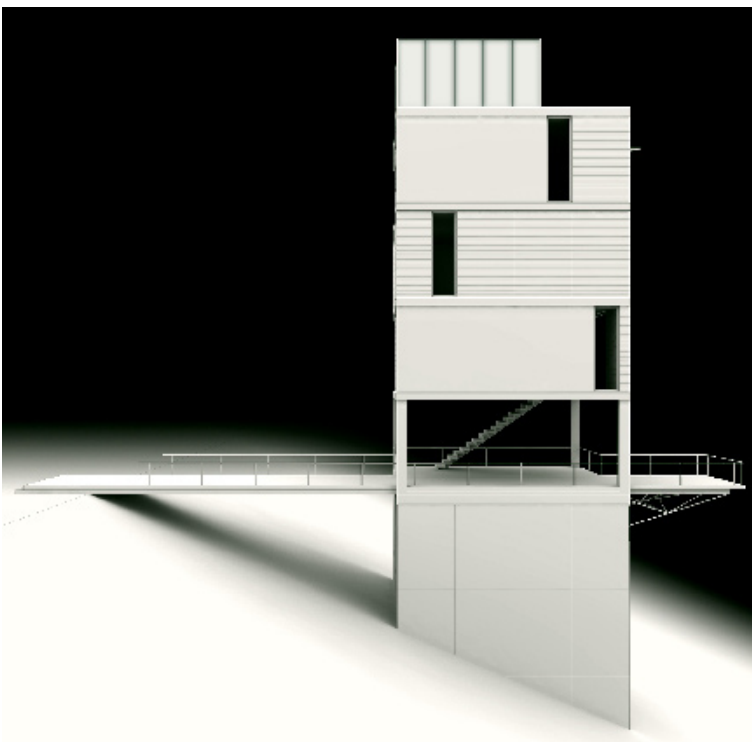
Photos: XXXXXXXXXXXXX



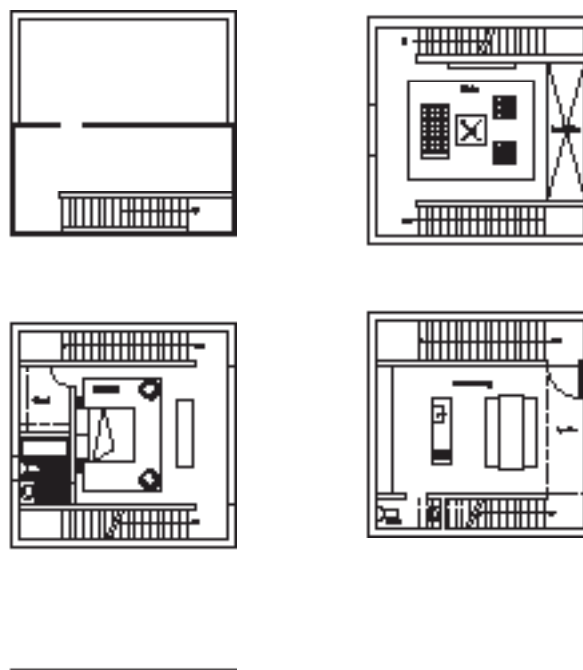
02



03



04



05



01



02

### WEEKEND RETREAT FOR A WRITER

The rehabilitation of a colonial 'saltbox' house, an archetypal American form with a hearth located dead center, strived to create a light, simplistic interior. This involved demolishing the separating walls, including the floor, and adding an entire roof of skylights on the north wall. A side wall was completely converted into bookshelves. A sleeping loft and a work area with spectacular views of the Catskill Mountains are located on the mezzanine. The exterior is entirely clad in mirror and literally reflects the surrounding landscape, changing drastically depending on the season, weather conditions and time of day.

01 Clapboard façade 02 Book shelves for 2000 volumes 03 Open living space 04 Floor plans

Renderings: XXXXXXXXXXXXX



03

