



Vista Tower

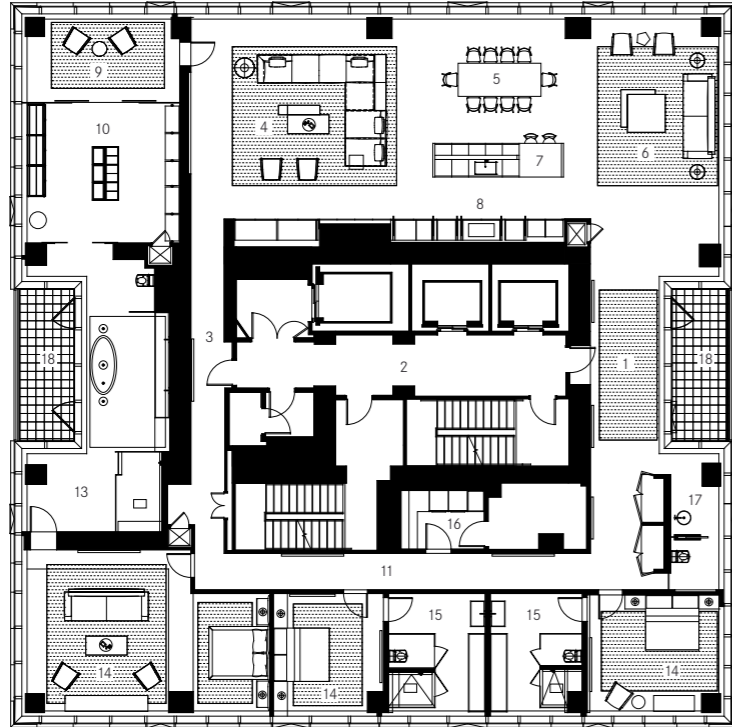
5,500 sq ft

Chicago, Illinois, United States

Axis Mundi

© Roman Syzonenko

Vista Tower, designed by Studio Gang, is a 101-story, 1,191 ft skyscraper built in Chicago, Illinois. It is the third tallest building on the skyline. Vista's full-floor Sky 360 Penthouses take luxury to another level. Rising from the 76th floor, these magnificent residences command uninterrupted 360-degree views across downtown Chicago and beyond. The architecture and design firm Axis Mundi designed this penthouse in which designer furnishings, limited editions, and important contemporary art create a dazzling space for a contemporary art collector. Known for their glamorous rock star sensibility, designer John Beckmann created a magnum opus which is refined, raw and understated.



Floor plan

- | | | |
|-----------------------|---------------------|----------------------------------|
| 1. Main entry gallery | 8. Kitchen | 15. Guest wardrobe / wc |
| 2. Vestibule | 9. Sitting area | 16. AV / IT, storage and laundry |
| 3. West gallery | 10. Wardrobe | 17. Powder room |
| 4. Living area | 11. Private gallery | 18. Terrace |
| 5. Dining | 12. Master bedroom | |
| 6. Lounge | 13. Master bathroom | |
| 7. Island | 14. Guest bedroom | |



As you enter, you are surprised by the spectacular views that serve as a backdrop for a modern and elegant ensemble where a corten steel sculpture signed by Tony Cragg undoubtedly takes the leading role.

The open living area highlights a spacious composition of the Wing seating system designed by Antonio Citterio and offers the perfect vantage point from which to admire one of the most famous word paintings created by US artist Christopher Wool.



Custom-designed bronze fittings and hardware were specifically designed to contrast with some of the more brutalist concrete textures of the project.



The master bedroom features antique leather sling chairs by Jacques Quinet, a bronze Quark table by Emmanuel Babled, a curvy organic sofa by Domeau & Peres, and suspended light fixtures by Vincenzo De Cotiis. The space is further enhanced by an exceptional Agnes Martin painting.





The master bathroom is lined with hot-rolled steel panels, floating monumental marble and hammered brass vanities, counterposed against a honey onyx divider. The bathtub was custom designed and fabricated from a single block of CNC-milled statuary white marble.

